



RHO-9052

15W Fluorescent Work Light

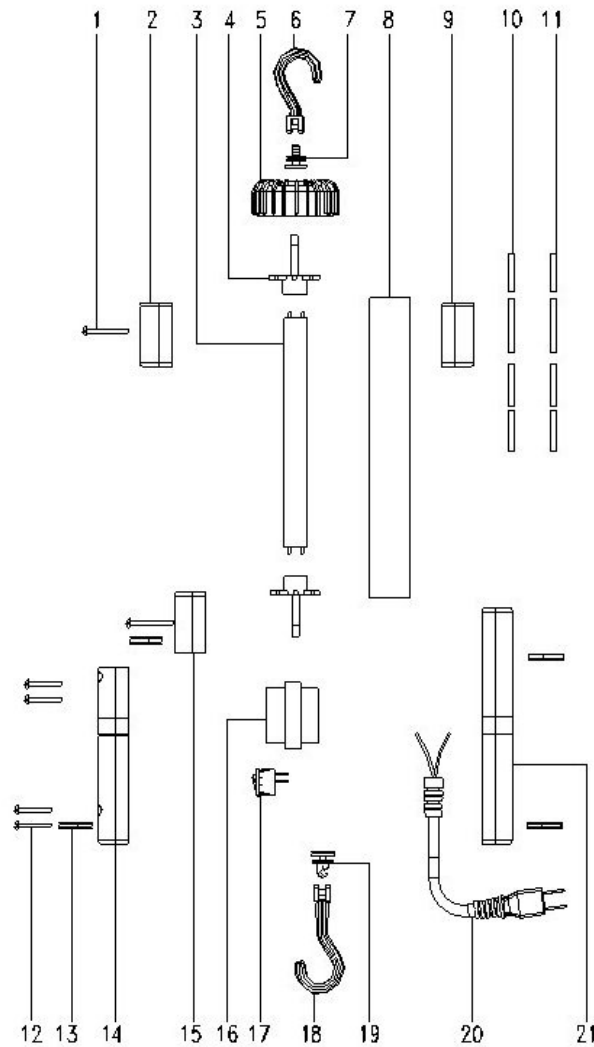


Features

- 25' 18/2 SJTOW cable.
- Dual Rotating Hooks allow the light to be easily suspended from various materials and locations.
- Impact Resistant Material for Long Lasting Durability
- Standard 15W Fluorescent bulb is easy to replace and is readily available in the North American aftermarket
- Protective PVC O-Rings on the handle and a PVC Bumper on top of light give additional impact strength and drop protection, especially in cold weather



RHO-9052



ITEM#	ORDERING PART#	PART DESCRIPTION
1	PRT9052-01	SCREW BB3.2X32
2	PRT9052-02	LEFT COVER
3	PRT9052-03	BULB
4	PRT9052-04	LAMP HOLDER
5	PRT9052-05	TOP HANDLE PROTECTOR
6	PRT9050-06	HOOK A
7	PRT9050-07	HOOK A HOLDER
8	PRT9052-08	CLEAR TUBE (LENS)
9	PRT9052-09	RIGHT COVER
10	PRT9052-10	WIRE BLACK
11	PRT9052-11	WIRE WHITE

ITEM#	ORDERING PART#	PART DESCRIPTION
12	PRT9052-12	SCREW BB3.5X25
13	PRT9052-13	ELASTIC
14	PRT9052-14	LEFT HANDLE
15	PRT9052-15	MIDDLE COVER
16	PRT9052-16	BALLAST
17	PRT9052-17	SWITCH
18	PRT9052-18	HOOK B
19	PRT9052-19	HOOK B HOLDER
20	PRT9052-20	POWER CORD
21	PRT9052-21	RIGHT HANDLE